

Clinical Neuropsychology Postdoctoral Fellowship Program

Overview

The Department of Psychiatry and Behavioral Sciences at Montefiore Medical Center (MMC) and Albert Einstein College of Medicine (AECOM) is accepting applications for a two-year Postdoctoral Fellowship in Clinical Neuropsychology beginning on September 1, 2024.

The Postdoctoral Fellowship in Clinical Neuropsychology at MMC is designed to educate and train individuals to meet the competencies necessary for the specialized practice of clinical neuropsychology, specifically preparing the fellow in a manner that will ensure eligibility for board certification. Over the course of the two-year program, the fellow will achieve a level of professional independence enabling them to compete effectively for early-career neuropsychology positions, especially in hospital-based roles involving close collaboration with physicians and medical staff. The fellow will also gain experience in supervising more junior neuropsychology trainees. The fellow's weekly hours will be divided roughly into 80% clinical services, 10% research, and 10% educational activities.

Important Dates & Key Information

Application Deadline:	December 4, 2023
Starting Date:	September 1, 2024
Salary:	\$75,000/year

Training model & program goals

The educational philosophy of the neuropsychology fellowship program at MMC is scientist-practitioner. It follows guidelines in clinical neuropsychology established by the Houston Conference on Specialty Education and Training in Clinical Neuropsychology. The primary goal of the neuropsychology program is to prepare fellows for professional practice in neuropsychology, ultimately leading to board certification by the American Board of Professional Psychology (ABPP) / American Board of Clinical Neuropsychology (ABCN).

The primary objective of the neuropsychology fellowship program is to facilitate the development and refinement of a wide range of professional skills specific to the field of clinical neuropsychology. Our program offers comprehensive training in clinical neuropsychology, including both mandatory and optional didactic activities. Additionally, it provides research training that is directly relevant to the discipline.

The fellowship is designed to equip neuropsychologists with the skills and knowledge necessary for them to function independently in various roles, including clinician, consultant, teacher, and program developer, all while recognizing the unique needs of underserved populations. These skills enable graduating fellows to obtain licensure in their state of practice, effectively operate within various professional contexts, and achieve board certification.

Faculty & primary training staff



Bryan Freilich, Psy.D., ABPP-CN, is the Director of Neuropsychology for the Department of Psychiatry and Behavioral Sciences and serves as Director of the Neuropsychology Fellowship Program. He is an Assistant Professor of Psychiatry and Behavioral Science at AECOM. His clinical and research interests include dementia differential diagnosis and the neuropsychological screening and assessment of sickle cell disease, systemic lupus erythematosus, acute lymphoblastic leukemia, and traumatic brain injury/concussion. Dr. Freilich is board certified by the American Board of Professional Psychology. He also serves as the Club Neuropsychologist for the New York City Football Club.



Nicole Feirsen, Ph.D., is the Associate Director of Neuropsychology Training and Head of Adult Neuropsychology Services. She is also an Assistant Professor of Psychiatry and Behavioral Sciences at AECOM. She evaluates cognitive and emotional functioning in individuals with a variety of neurological, medical and psychiatric disorders across the lifespan, including dementia, stroke, cancers, autoimmune diseases, traumatic brain injury, mood disorders, and attention disorders. Her current research is focused on the validation of a screening measure designed to efficiently identify cognitive impairment in a wide variety of patient populations.



Jodi Uderman, Ph.D., is the Head of Pediatric Neuropsychology Services. She is also an Assistant Professor of Psychiatry and Behavioral Sciences at AECOM. She conducts comprehensive neuropsychological evaluations across the lifespan and has a particular focus on working with children, adolescents and young adults with neurodevelopmental disorders, childhood cancers, sickle-cell anemia, pediatric lupus, and pediatric stroke. She also has a special interest in educational advocacy and uses her understanding of a child's cognitive functioning to help them succeed in the school setting.



Elyssa Scharaga, Ph.D., is the Head of Neuropsychology Services at our Westchester site. She is also an Assistant Professor of Psychiatry and Behavioral Sciences at AECOM. Dr. Scharaga's clinical practice includes evaluation and treatment of adults diagnosed with chronic and acute medical conditions across the lifespan, such as neurodegenerative diseases, cardiovascular diseases, cancers, traumatic brain injuries, infectious diseases, and movement disorders. Dr. Scharaga is committed to promoting diversity and inclusion within her clinical and supervisory work.

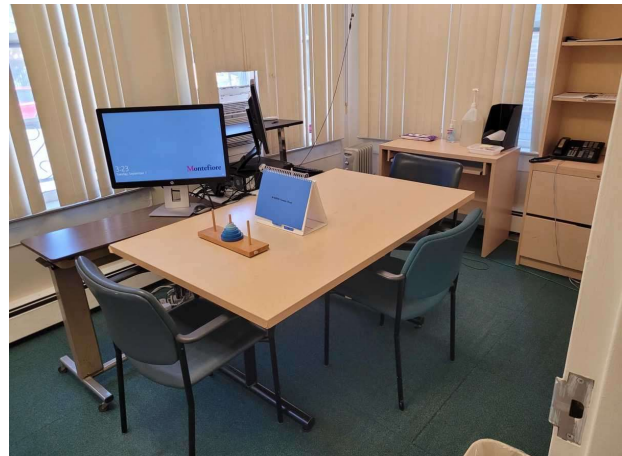
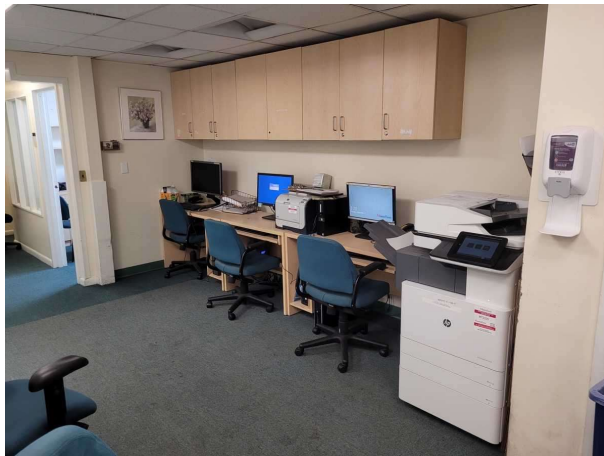
Overview of the fellowship

Clinical activities

Fellows are responsible for seeing two to three assessment cases per week. Our program uses a rotation system in which fellows switch between working with sets of attendings every three months. Cases take place predominantly within the Neuropsychology Assessment Service (NAS), but fellows will also participate in outpatient cases at the Comprehensive Brain Health Center (CBHC) as well as inpatient cases at MMC and the Children's Hospital at Montefiore (CHAM)

Neuropsychology Assessment Service (NAS)

The NAS is an outpatient assessment program located on the Moses Campus of MMC in the Bronx, NY. The NAS serves a heterogeneous group of children (ages six and up), adolescents, adults, and older adults with a variety of conditions, including but not limited to Alzheimer's disease and other dementias, stroke, traumatic brain injury, Parkinson's disease and other movement disorders, multiple sclerosis, epilepsy, anoxic brain injury, HIV-associated neurocognitive disorder, systemic lupus erythematosus, sickle cell disease, brain tumors and other types of cancers associated with cognitive changes (e.g., leukemia and breast cancer treatments), ruptured aneurysms/arteriovenous malformations, and attention-deficit/hyperactivity disorder.



Comprehensive Brain Health Center (CBHC)

The CBHC is a newly launched multidisciplinary center dedicated to providing state-of-the-science, compassionate whole person care for individuals with brain disorders such as epilepsy, movement disorders, stroke, CNS tumors, and pediatric disorders of the brain and spine. It is located in Westchester County, NY.



Research

Fellows are required to participate in research and will have protected research time. The expectation is that fellows will complete one to two research projects over the course of the two-year fellowship, resulting in at least one publication in a peer-reviewed journal. Faculty in the NAS are currently involved in research in a number of different areas, including the screening, assessment, and characterization of neuropsychological sequelae of sickle cell disease, acute lymphoblastic leukemia, systemic lupus erythematosus, and COVID-19. In addition, the psychology faculty at Montefiore are currently involved in research in a number of different areas, including anxiety and depression, behavioral health services utilization, psychological assessment, cognitive behavior therapy, adolescent suicide, and eating disorders. Fellows may select a faculty member from our Research Mentor List or request an alternate mentor within the Montefiore-Einstein system.

Supervision

Fellows receive a minimum of two hours of regularly scheduled individual weekly supervision. In practice, fellows often receive more supervision than the minimum requirement, including additional scheduled individual sessions, on-the-spot consultation and guidance as necessary, and group supervision sessions. Our supervisors also serve as mentors, addressing various aspects of professional development, including individual professional interests, career preparation, and overall progress and goals during the fellowship. The fellow will also gain

experience in supervising more junior neuropsychology trainees, including neuropsychology interns and externs.

Seminars and other didactics

On-site clinical neuropsychology experience is supported by required didactic seminars, which include our weekly neuropsychology seminar series and weekly psychiatry and neurology grand rounds. Brain cuttings, led by a neuropathologist, and various neurology case conferences (e.g., vascular, epilepsy, neuromuscular, headache, pediatric neurology) are also available to the fellow.

Stipend & Benefits

Fellows will earn \$75,000 annually. Fellows are considered full-time MMC employees and will receive comprehensive medical and dental coverage, 20 vacation days, 12 sick days, nine hospital holidays, and up to five conference days. They can also receive up to \$2000 conference support and an educational resource allowance of \$500, which can be used toward purchasing textbooks, software, iPhones, iPads, e-readers, payment of professional society membership dues, etc. Fellows have their own offices with computers and high-speed internet access. They are also assigned a Montefiore (Microsoft Outlook) email address and have full use of Montefiore and Albert Einstein College of Medicine libraries, including free interlibrary loan and online access to full-text journals, e-books, and streaming videos.

Fellowship Evaluation

As a training program, our commitment lies in fostering the professional development of each fellow across various aspects of their professional functioning. The neuropsychology fellowship training program utilizes supervision and direct observation of professional activities to inform our evaluation ratings. Our aim is to create a feedback process that is transparent, consistent, and beneficial for all our trainees. Additionally, we endeavor to integrate the practice of giving and receiving feedback into the very culture of our training program.

Fellows undergo evaluations at multiple points throughout each training year, specifically at the 3-month, 6-month, 9-month, and 12-month marks, which coincide with the conclusion of each rotation. During these formal evaluation periods, fellows and their supervisors hold designated meetings to comprehensively review the fellow's performance to date, their experiences within the training program, and plan for any additional experiences or areas of emphasis that the fellow wishes to enhance.

Prior to the feedback meetings scheduled at the 6-month and 12-month marks, supervisors complete a comprehensive competency rating form. This form is based on recent publications pertaining to neuropsychological training and includes narrative comments addressing strengths and areas for growth. The competency rating form outlines the criteria for acceptable ratings on both general and specific competencies at each evaluation period.

Application & selection procedures

The program seeks qualified applicants from doctoral training programs in clinical and counseling psychology. The fellowship program seeks applicants who are completing a neuropsychology-focused internship and intend to pursue a career as a neuropsychologist.

Applicants must have completed all requirements for their doctoral degree, which includes the successful defense of their dissertation, prior to starting the postdoctoral fellowship. In order for the program to make an offer to an applicant who has not yet completed their defense, a letter from the dissertation chair attesting that the dissertation will be completed prior to the start of the fellowship is required.

Postdoctoral fellows are selected on the basis of academic excellence, clinical experience, research experience, recommendations of professors and supervisors, and interview.

Please note: The neuropsychology postdoctoral fellowship program does not participate in the APPCN Match system.

Please note, by accepting a postdoctoral training position at our site, the applicant is agreeing to complete TWO full years of fellowship training. Consequently, it is fully expected that once an applicant accepts the position, they will cease to pursue other postdoctoral or staff positions and will plan to complete the full training program at this facility. If an applicant has any reason to believe that they may not complete the fellowship program, they should not apply nor accept an offer for training at this site

Application materials & process

All application materials are to be submitted electronically within a single email, as described below. Please note that paper materials mailed to the program cannot be accepted.

Email application materials to bfreilic@montefiore.org.

The following materials are required:

1. A cover letter
2. CV (which includes a brief description of internship rotations)
3. Two redacted comprehensive neuropsychological evaluation reports
4. Three (3) signed letters of recommendation (at least one from an internship supervisor).

APPLICATION DUE DATE – Dec. 4, 2023

For application questions:

Dr. Bryan Freilich

Director of Neuropsychology

bfreilic@montefiore.org

Interviews will be conducted virtually. Three interview dates will be offered: 12/18/2023, 12/27/2023, 1/16/2024. We will begin making offers following completion of interviews until the position is filled.

Program setting



The neuropsychology fellowship program is housed within the Montefiore Health System, one of the largest healthcare systems in the nation, offering a full range of services to approximately two million individuals from the Bronx, Westchester County, and the lower Hudson Valley, as well as many from across the nation and around the world. In addition, the U.S. Census considers the Bronx to be one of the most diverse areas in the country, in terms of race and ethnicity, with the majority of the population speaking a foreign language at home (45% of which is Spanish). In particular, the demographics of the Bronx are characterized by a Hispanic majority, which is unique among New York City's boroughs. Our patients also present with an immense range of both acute and chronic medical and mental health issues, as well as numerous psychosocial and environmental stressors (e.g., complex trauma, low SES, lower levels of early childhood development, increased social exclusion, decreased social support, decreased availability of healthy food, decreased accessibility to health transportation, etc.) and higher rates of addiction. is a component of the psychology service, which employs 40 psychologists along with a large number of associated staff.

Fellowship alumni:

Elise Welton (2014-16):

Neuropsychologist, McLean Hospital; Boston, MA

Nicole Feirsen (2016-18):

Neuropsychologist, Montefiore Medical Center; Bronx, NY

Beril Yaffe (2018-20)

Neuropsychologist, Lenox Hill Hospital; NY, NY

Rebecca Avila-Rieger (2020-22)

Neuropsychologist, private practice; NY, NY